

POLYPROPYLENE PP 8300G (EPYS30RE)

Product obtained by copolymerization of propylene and ethylene in presence of complex metalorganic catalysts.

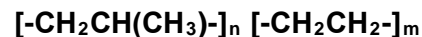
It incorporates higher long-term thermal stability, thermal-oxidative degradation resistance during PP production, processing and use of PP-made articles, improved antistatic properties for articles production.

Application: blow molding, extrusion and thermal molding.

Chemical name:

Propylene and Ethylene block copolymer

Empirical formula:



Technical requirements:

TU 20.16.51-136-05766801-2015

PROPERTY	VALUE	TEST METHOD
1. Melt flow rate (at 2.16 kg/230°C), g/10 min, in the range	1.2 – 1.5	ASTM D1238/L
2. Flexural modulus, MPa, min	1150	ASTM D 790
3. Izod impact strength, J/m, min at 23°C at -20 °C at -40 °C	500 50 -	ASTM D 256
4. Tensile strength at yield, MPa, min	Not rated	ASTM D 638
5. Elongation at yield %, min.	Not rated	ASTM D 638

Additional reference ratings

PROPERTY	VALUE
1. Density, kg/m3	900
2. Packed density of pellets, kg/m3	480-600
3. Mass fraction of ash, %	0.025-0,050
4. Thermal-oxidative aging resistance at 150 oC, h	360
5. Vicat softening point in liquid medium under force 10 N, °C	126-150
6. Heat distortion temperature at load 0.46 N/mm ² , °C	64-90
7. Rockwell hardness, R	40-88

- Supply form:** Pellets
- Packaging:** Product is packed into polyethylene or polypropylene bags (one bag net weight 25.00 ± ±0.25 kg) and bundled on flat pallets with shrink film. Gross weight of a bundle is max 2 t.
PP may be packed into soft containers (big bags) sized for 400-1000 kg.
Upon agreement with Customer PP pellets are bulk loaded into railway cars, tipper trucks or loaded in bags to railway cars.
- Transportation:** By all transport means.
- Storage:** Storage: Polypropylene shall be stored in enclosed dry space preventing from direct sun rays, on shelves or pallets at least 5 cm from the floor, and at least 1 m from heaters, at temperature max 30°C and relative humidity max 80%.
Prior to processing, bags with polymer shall be kept for at least 12 hrs in production area.

Information contained herein is provided to the best of our knowledge and is considered true on the revision date. This specification does not release customer from the responsibility to check the product for suitability for the intended use. Manufacturer bears no liability for any loss and damage which may occur due to use of this information.